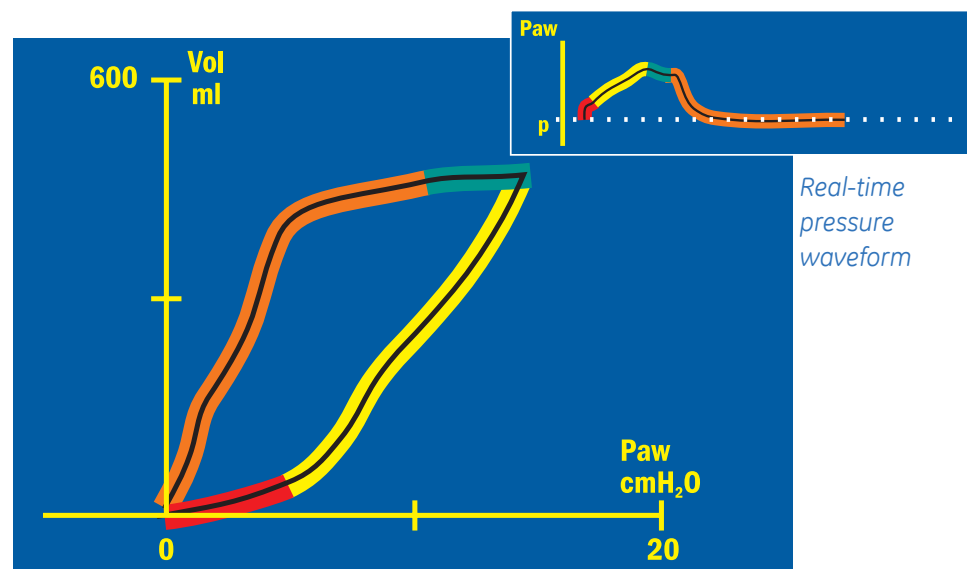


Patient Spirometry

Viewing your patient's actual ventilatory status

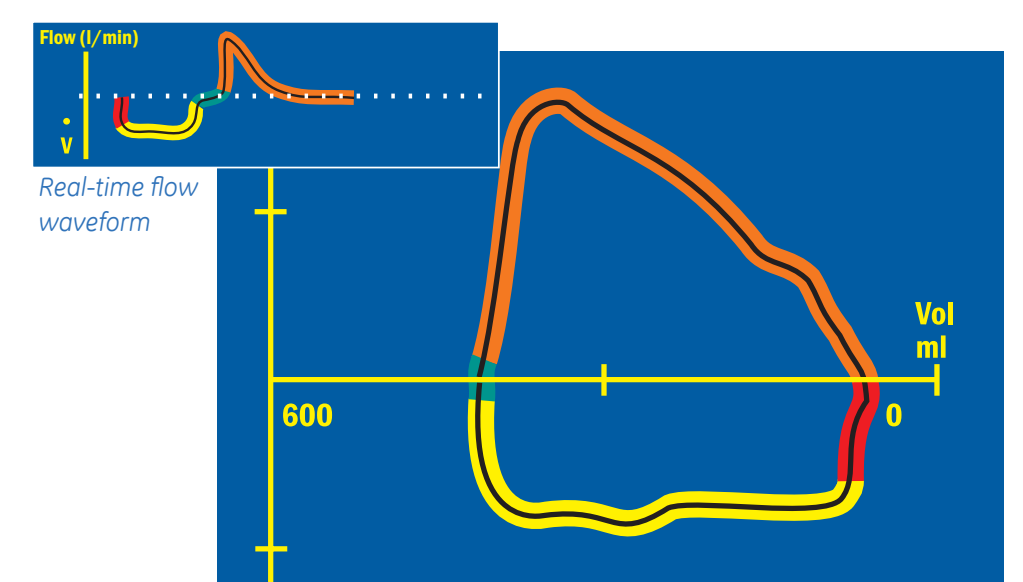
Pressure-Volume Loop



Using a single sensor at the patient's airway, Patient Spirometry enables you to evaluate your patient's ventilatory status, breath by breath, reliably and easily, regardless of the type of ventilator.

- 1. Beginning of inspiration
- 2. Inspiration
- 3. Pause
- 4. Expiration

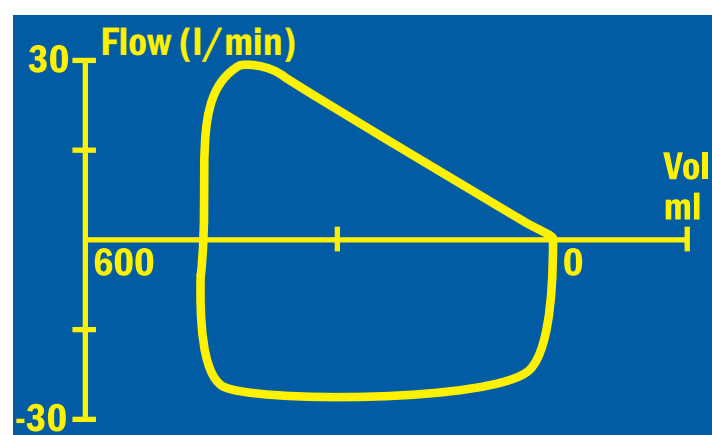
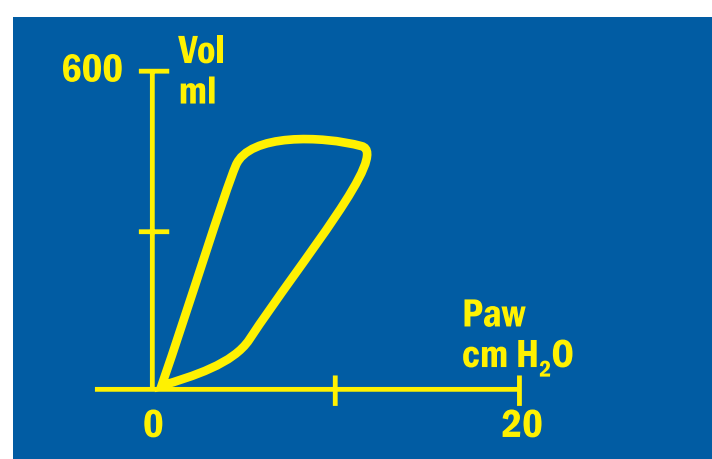
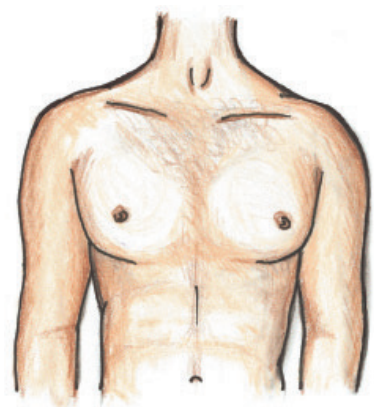
Flow-Volume Loop



Each patient generates an individual loop

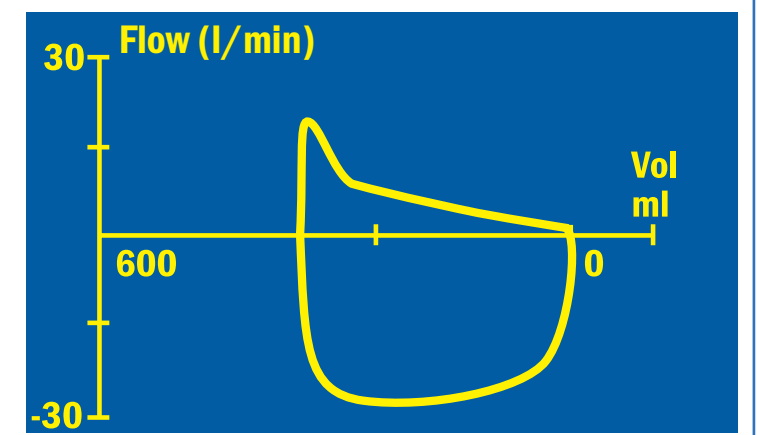
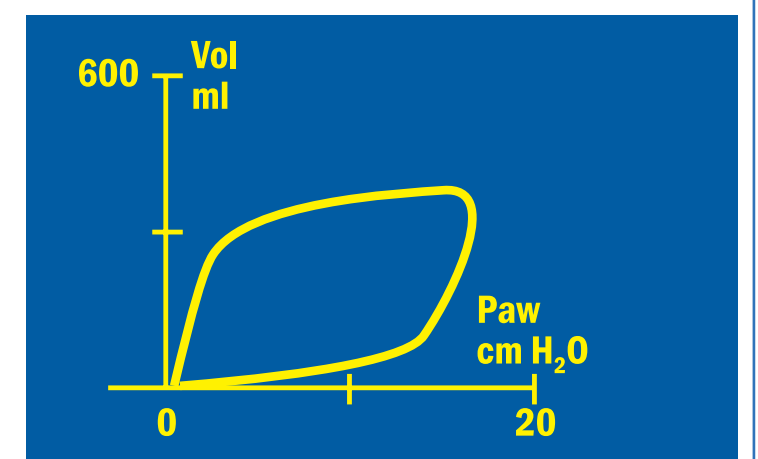
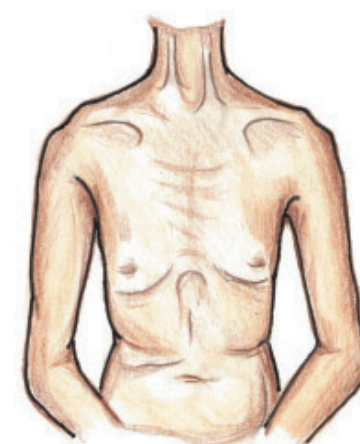
Example 1

Healthy young male
Compl = 70 ml/cmH₂O



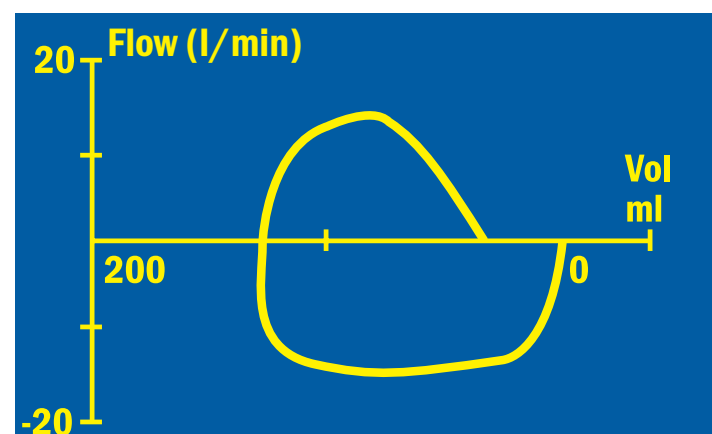
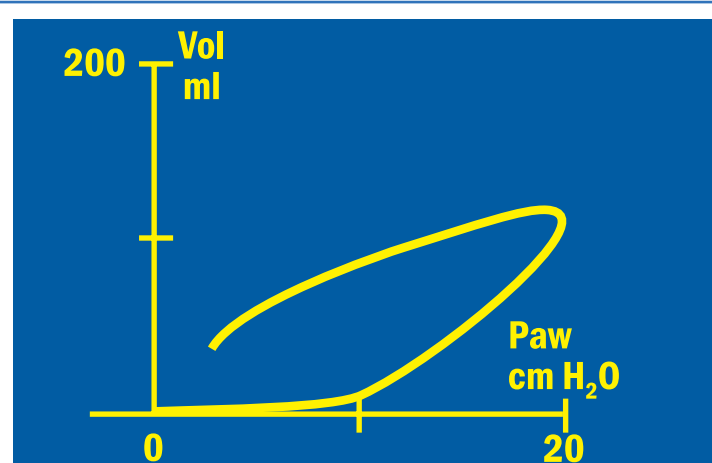
Example 2

Patient with COPD
Compl = 36 ml/cmH₂O



Example 3

Infant with cuffless
ET-tube (leak), 6 kg
Compl = 8 ml/cmH₂O



Example 4

Morbidly obese patient
Compl = 39 ml/cmH₂O

